

# AMBER RAIL FREIGHT CORRIDOR

## 5 years of RFC Amber

**Márk Hány | Managing Director**

Joint RAG-TAG meeting | Nagycenk / Hungary – 14 May 2025

# RFC Amber | Routing



## Commission Implementing Decision EU (177/2017):

„Koper – Ljubljana –/Zalaszentiván – Sopron/Csorna –/(Hungarian-Serbian border) – Kelebia – Budapest –/– Komárom – Leopoldov/Rajka – Bratislava – Žilina – Katowice/Kraków – Warszawa/Łuków – Terespol – (Polish-Belarusian border)”



Routing reflects **market demand** & was elaborated together with the RUs



## Seamless electrified principal route

End-to-end ca. 1400 km



## Gateway to South-Eastern Europe

Connection to Transbalkan-route (via Kelebia)

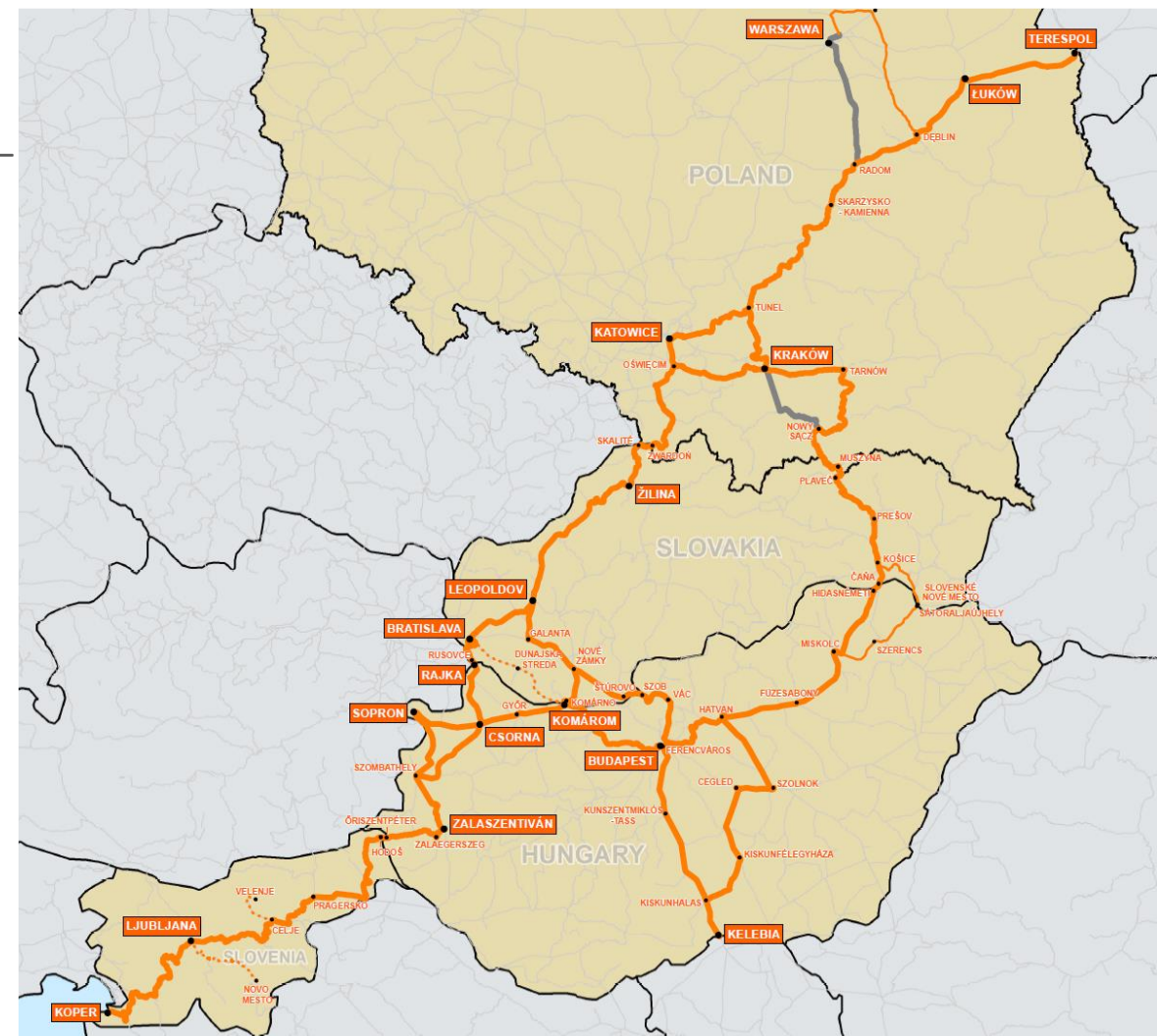


## Gateway to Euro-Asian railway routes

Trans-Siberian / Euro-Asian Railway Routes (via Terespol)



Co-funded by  
the European Union





# Genesis of RFC Amber



# Corridor Implementation | 2018

- Governance structure established
- Internal Rules of Procedure for ExBo & MaBo
- CID Books
- Implementation Plan
- Transport Market Study
- Framework for Capacity Allocation
- RAG-TAG platforms established
- KPIs of Amber
- C-OSS Operational Rules
- C-OSS Contract
- PaP Catalogue TT2020



Activities of the corridor were co-financed by the European Union from PSA funds



Documents were published on the website  
<https://rfc-amber.eu/>



Co-funded by  
the European Union

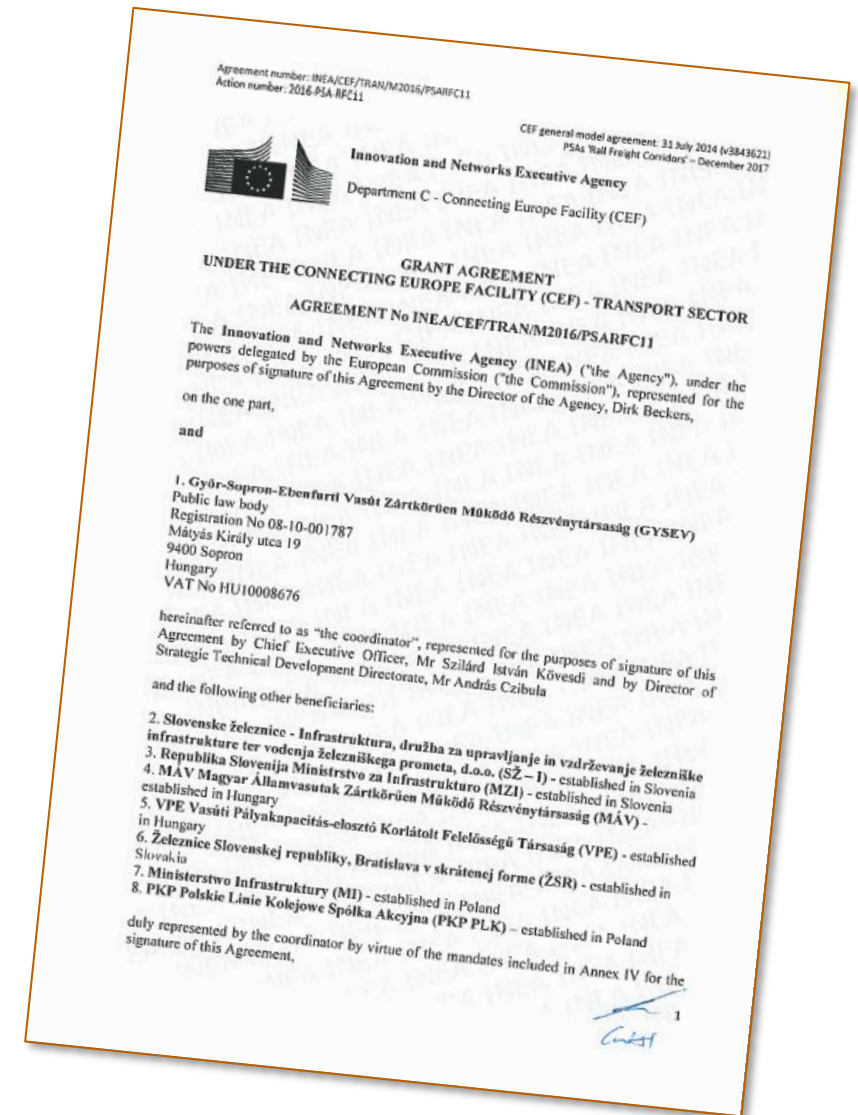
# Further important activities | 2018

- First participation in the TEN-T Days in Ljubljana
- Kick-off meeting for RAG-TAG | 23 May 2018, Brzesko, Poland
- Election of Mr András Nyíri as RAG-TAG Spokesperson
- Joining of RFC Amber as Associate Member to RNE



# Program Support Action (PSA) | infocus 2018

- Beneficiaries
  - SŽ-I, GYSEV, MÁV, ŽSR and PLK and the Hungarian Rail Capacity Allocation Office VPE
  - Ministries in charge of transport of Poland and Slovenia.
- Coordinator | GYSEV
- Signature of Grant Agreement | Spring 2018
- Amount of funding | ca. 1.1 mio EUR





# In pictures | 2018



# Governance structure



REPUBLIC OF SLOVENIA  
**MINISTRY OF INFRASTRUCTURE**

Executive Board

Management Board

Managing Director

Advisory Group  
Terminals

Coordination Group

Secretariat

Advisory Group  
RUs

Ad-hoc project teams

Corridor OSS

Working Groups

Traffic Management, Train Performance  
and Operations

Marketing and  
Communication

Infrastructure,  
Interoperability and ERTMS

Temporary Capacity  
Restrictions

Timetable and  
One Stop Shop

Legal Working Group

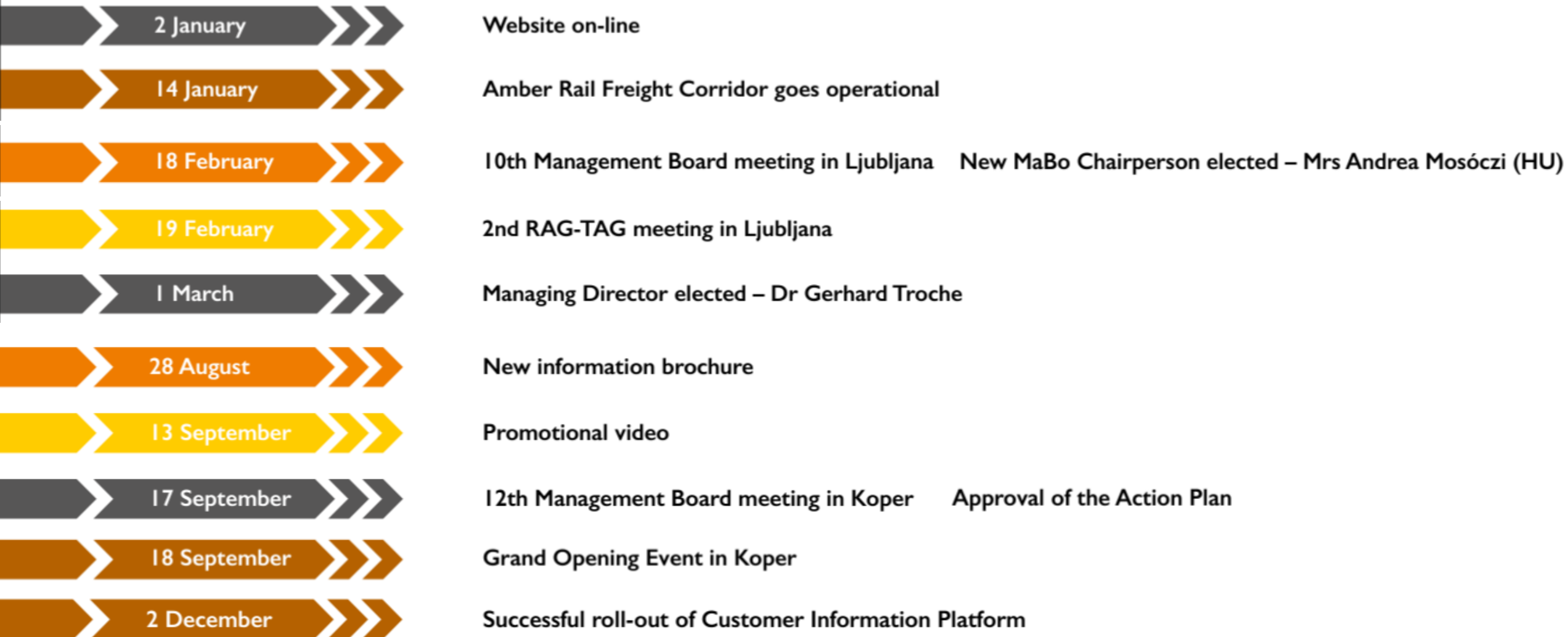


Co-funded by  
the European Union

Your Vision Our Mission



# Timeline 2019



# Action plan | infocus 2019

- Aim was in contact with the RAG-TAG Spokesperson to discuss possible activities and priorities
- Short- and long-term activities for the Management Board and suggestions on an indicative basis complementary activities to the Executive Board and the RAG-TAG
- Intention was to present (intermediate) results at the RAG-TAG meeting in spring 2020
- With the RFC Amber Action Plan the corridor demonstrates its customer-orientation and ambition to develop the corridor in line with market needs.



# In pictures | 2019





# Timeline 2020

13 January

Publication of PaP Catalogue for TT 2020/2021

13 January

Publication of CID Books for TT 2020/2021

27 March

Launching of e-Newsletter

6 July

Publication of the first RFC AMBER Annual Report for 2019

21 September

Launching of the User Satisfaction Survey

1 October

Re-election of the: MB Chair, MB Vice-Chair, Managing Director  
C-OSS and Secretariat

18 December

Finalisation and approval of the Bottleneck Study



Co-funded by  
the European Union

# Bottleneck Study | infocus 2020

## Infrastructure and capacity bottlenecks, interventions

- a) Most critical sections for the functionality of RFC Amber are those where current capacity is already insufficient.
- b) Infrastructure developments should focus on elimination of significant restrictions (axle load, speed, train length primarily)
- c) Interventions at nodes should focus on capacity for long freight train handling and supporting seamless traffic flow along the lines; triangle tracks at various nodes can avoid time-consuming and repeated changes of travelling direction.
- d) Line bottlenecks are interlinked to problems at nodes and vice versa (e.g. punctuality, uncertain ETA at the border influences the unnecessary waiting time and RU efficiency, organisation)
- e) Relative priority of sections in each member states are set in the study to support decision making

## Operational and administrative issues, measures

- a) Note the limited operational experience of RFC Amber
- b) Theoretical order of measures – many have been long in the forefront of the sector (RNE)
- c) Operational and administrative issues often specific to different places; solutions cannot always be applied uniformly to all member states, IMs or hand-over points
- d) Most of the identified issues have been addressed; efforts, have been made for improvement at EU/ RNE level or at other RFCs;
- e) At EU/RNE level guidelines, IT support have been developed – they need to be adopted in RFC Amber management processes



# Timeline 2021

22 February	Publication of the Bottleneck Study
25 February	18th Management Board meeting (online)
1 June	19th Management Board meeting (online)
2 July	RFC Amber in social media
18 August	Publication of the RFC Amber Annual Report for 2020
26 August	Launching of the User Satisfaction Survey
11 September	Connecting Europe Express event in Sopron, Hungary





# Longer trains on RFC Amber | infocus 2021

- Increased train length high-ranking expectation by railway undertakings in the RFC AMBER User Satisfaction Surveys
- Train length restrictions identified as barrier in RFC AMBER Bottleneck Study
- TT 2019-2021: Train paths with increased train length Czechowice Dziedzice (PL) – Žilina (SK)
- 2019-2021: Investigation of bigger train length in Western Hungary key activity of RFC-AMBER-Member GYSEV in the Interreg-project CORCAP (Capitalising TEN-T corridors for regional development and logistics)
- 20 October 2021: TEN-T Demo-Train – first 740 meter long freight train on the section Sopron – Budapest



# In pictures | 2021





# In pictures | 2021





# In pictures | 2021



Co-funded by  
the European Union

# Timeline 2022

10 February

Re-election of positions of the Chairperson, Managing Director, C-OSS manager and Secretariat

28-30 June

Connecting Europe Days in Lyon

19 July

Management Board meeting (25th) online

7 September

RFC Amber participates in the DAC Workshop in Budapest

15 September

Launching of the User Satisfaction Survey

6-7 October

Joint meeting with the RFC Amber and RFC Baltic-Adriatic Railway and Terminal Advisory Groups in Prague

18 October

Launching of the User Satisfaction Survey of CIP



Co-funded by  
the European Union

EUROPEAN YEAR OF RAIL **2021**

Your Vision **Our Mission**

# Technical assistance | infocus 2022

- D1.1 – Implementation plan [Art 9]; Lead Beneficiary: VPE
- D1.2 – Transport market study [Art 9(3)]; Lead Beneficiary: GYSEV
- D1.3-1.5 – Documents on infrastructure works [Art 12] – 2022, 2023 and 2024; Lead Beneficiary: PLK
- D1.6-1.8 – Documentation on capacity needs & capacity provided / requested [Art 13 and 14] – 2022, 2023 and 2024; Lead Beneficiary: PLK
- D1.9-1.11 – Register of capacity requests [Art 15] – 2022, 2023 and 2024; Lead Beneficiary: PLK
- D1.12-1.14 – Corridor Information Document [Art 18] – 2022, 2023 and 2024; Lead Beneficiary: VPE
- D1.15-1.17 – Document on performance monitoring & user satisfaction [Art 19(2) and 19(3)] – 2022, 2023 and 2024; Lead Beneficiary: VPE
- D1.18 – Further documentation; Lead Beneficiary: GYSEV





# In pictures | 2022



Co-funded by  
the European Union

# Timeline 2023

9-12 May

Transport and Logistic Fair in Munich

22 May

Railway and Terminal Advisory Group meeting in Dunajská Streda

30 May

Rail Transport Day in Stockholm

21 June

Publication of the RFC Amber Annual Report for 2022

22 June

Management Board meeting (30th) online

24 August

Launching of the User Satisfaction Survey

12 September

Management Board meeting (31st) in Krakow

5 October

Joint meeting with the RFC Amber and RFC Baltic-Adriatic Railway and Terminal Advisory Groups in Rome

9 October

Publication of Reserve Capacity Catalogue for TT 2024

19 October

RFC Amber participates in Baltic-Adriatic Forum in Budapest



Co-funded by  
the European Union

EUROPEAN YEAR OF RAIL **2021**

Your Vision **Our Mission**

# Adoption of new objectives | infocus 2023

Objective	Target 2024	Target 2028 (5 years)
Average planned speed of PaPs	+12,5 %	+25 %
Punctuality at destination (<= 30 min.)	+ 5 %	+ 12 %
Dwell times in border sections	- 10 %	- 25 %
Number of trains per border	+ 3 %	+ 10 %
Provision of paths with improved para-meters, e.g. train length or train weight	6 paths	10 paths





# In pictures | 2023



# Timeline 2024

3-4 April	Connecting Europe Days in Brussels
22 May	Management Board meeting (34 <sup>th</sup> ) Sopron
23 May	Joint meeting with the RFC Amber and RFC Baltic-Adriatic Railway and Terminal Advisory Groups in Sopron
2 September	Launching of the User Satisfaction Survey
5 September	Hungarian RFC Customer Day hosted by RFC Amber
3 October	Joint meeting with the RFC Amber and RFC Baltic-Adriatic Railway and Terminal Advisory Groups in Krakow
10 October	Management Board meeting (35 <sup>th</sup> ) online
14 October	Publication of Reserve Capacity Catalogue for TT 2025
28 October	Publication of the RFC Amber Annual Report for 2023
17 December	Management Board meeting (36 <sup>th</sup> ) Ljubljana





# Adoption of TEN-T regulation | infocus 2024

- Revised TEN-T regulation (EU 1679/2024) | entering into force summer 2024
- Merger of the eleven Rail Freight Corridors (RFCs) and Core Network Corridors (CNCs) into the new nine European Transport Corridors (ETCs)
- Preparation of the basis of forming the new ETC Baltic-Adriatic
- Joint MB meetings
- Joint RAG-TAG meetings
- Joint efforts within WG activities
- Preliminary discussions about merger with / extension of RFC Baltic-Adriatic





# In pictures | 2024



# RFC Amber | facts & figures

- 110+** newsletters and news releases
  - 60+** Management Board and Coordination Group Meetings
  - 40+** Working Group Meetings
  - 30+** Project planning workshops
  - 10+** RAG-TAG and other customer oriented events
  - 6** Annual Reports in printed edition
  - 3** Market analysis studies (2 TMS and 1 Bottleneck Study)
- 20 000** trains per year



# Legacy of RFC Amber

- The RFC Amber lines closed important gaps in the network of freight corridors and provide the extended RFC Baltic-Adriatic with a second North-South route, providing more route options, additional capacity and better coverage of freight flows.
- With its relatively low gradients, the Western Hungarian North-South axis – a key section of RFC Amber – offers a flat North-South route east of the Alps ideal for freight.
- In case of disruptions, the lines of RFC Amber and Baltic-Adriatic have already in the past served as mutual rerouting lines, giving flexibility, i.a. in the context of International Contingency Management (ICM).
- With the inclusion of RFC Amber lines into RFC Baltic-Adriatic, the latter will comprise a continuous North-South route fully within NATO territory, a valuable feature in the context of military mobility in the European Union.
- RFC Amber has also drawn attention to the importance of rail routes connecting the eastern regions of Poland, Slovakia and Hungary. These sections of RFC Amber will form part of the future Baltic Sea – Black Sea – Aegean Sea Corridor. The Budapest – Kelebia section of RFC Amber, important for freight traffic with South-Eastern Europe, will form part of the extended RFCs Rhine-Danube and Alpine-Western Balkan.





# AMBER RAIL FREIGHT CORRIDOR

## Thank you for your attention!

[www.rfc-amber.eu](http://www.rfc-amber.eu)



Co-funded by  
the European Union

